

EXECUTIVE TEAM



RICHARD SMITH
INTERIM DIRECTOR/ CITY
ENGINEER



RANDY MACCHI
CHIEF OPERATING OFFICER



DIRECTOR
CAPITAL PROJECTS



CHRIS BUTLER
DEPUTY CHIEF
OPERATING OFFICER



JOHANA CLARK
ACTING DIRECTOR
TRANSPORTATION AND
DRAINAGE OPERATIONS



GREG EYERLY
DIRECTOR
HOUSTON WATER



GINA GUILLORY
ACTING DIRECTOR
CUSTOMER ACCOUNT
SERVICES



RUDY MORENO
DIRECTOR
HOUSTON PERMITTING CENTER



SAMIR SOLANKI
CHIEF FINANCIAL OFFICER



PERRI STOREY
ACTING CHIEF OF STAFF



KEVIN BERRY
CHIEF TECHNOLOGY
OFFICER



BRIAN MASON
EXECUTIVE DIRECTOR
HOUSTON TRANSTAR



KATELYNN BURNS
DIRECTOR
COMMUNICATIONS



ROBERTO MEDINA
DIRECTOR
GOVERNMENT RELATIONS

CHIEF OF STAFF

PERRI STOREY

ACTING CHIEF



MINA KENNISON

BUDGETING AND REPORTS

RAY BELTON

ORGANIZATIONAL CULTURE AND
ENGAGEMENT DEVELOPMENT

ED MONSIVAIS

LEARNING AND DEVELOPMENT
DEPUTY ASSISTANT DIRECTOR

BOBBY QASIM

INTERNAL REVIEW

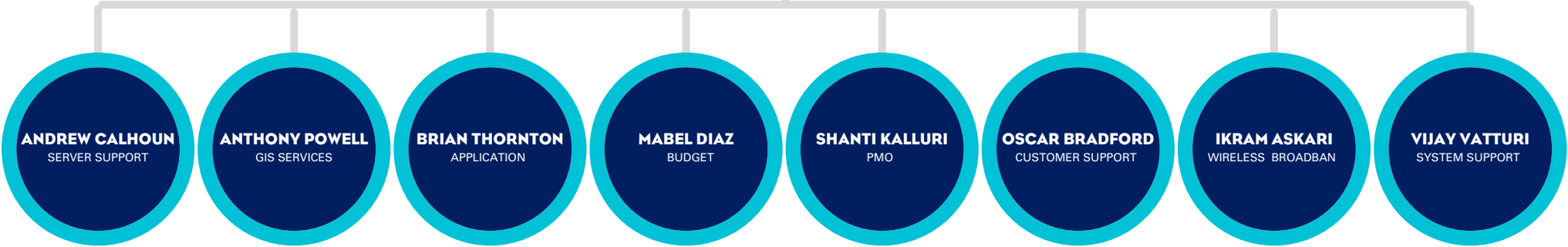
**STEPHANIE
MORRIS-READORE**

ADA & DEIB

RUTH BOCANECRA

POLICY MANAGEMENT

KEVIN BERRY
CHIEF



DIRECTOR



TANU HIREMATH,
PE, CFM, ENV SP
INFRASTRUCTURE

JODY CRAZE,
PMP, CCM
TECHNICAL SUPPORT
SERVICES

ADDIE JACKSON,
ESO.
REAL ESTATE

DAIREYON HOOKS
PROJECT MANAGEMENT
OFFICE

RAVI KALEYATODI,
PE
NEWPP EXPANSION
PROJECT

MARKOS MENGESHA,
PE, CCM, ENV SP
FACILITIES

CHERYL HARRIS
PROJECT SUPPORT
SERVICES

CUSTOMER ACCOUNT SERVICES



GINA GUILLORY
ACTING DIRECTOR



SAMIR SOLANKI
CHIEF



RUDY MORENO
DIRECTOR



GREG EYERLY
DIRECTOR



TRANSPORTATION & DRAINAGE OPERATIONS

**JOHANA CLARK, PE, PTOE,
ENV SP**
ACTING DIRECTOR



**MICHAEL WAHL,
PE, PTOE**
PROJECT DELIVERY

FABIO CAPILLO
TRAFFIC, STREET, &
BRIDGE MAINTENANCE

TRACY SAMUEL
SUPPORT SERVICES

**KHANG NGUYEN,
PE, PTOE**
MULTIMODAL
SAFETY & DESIGN

STORM WATER

BRIAN MASON
EXECUTIVE DIRECTOR



JOSH SHIDELER
SENIOR STAFF
ANALYST

BYRON OUJESKY
SENIOR STAFF
ANALYST

THUY LA
SENIOR STAFF
ANALYST

ROBERTO MEDINA
DIRECTOR



JULIE GARCIA
SENIOR STAFF ANALYST

ANTOINE COLLINS
SENIOR STAFF ANALYST

MARIA PEREZ
SENIOR STAFF ANALYST

KATELYNN BURNS
DIRECTOR

